

Wise PDF Watermark

Wise PDF Watermark is a speedy, efficient and strongly practical desktop application that allows you to stamp images or text watermarks on your Acrobat PDF documents swiftly and easily so as to protect your copyright property. Wise PDF Watermark provides different types of watermarks with a plenty of professional settings.

With a concise and humanistic operation interface, you will feel comfortable when you are dealing with your PDF files. It is easier for you to add the watermarks intuitively in just several seconds and you will easily conquer any problems of adding watermarks into the PDF files. Wise PDF watermark also provides you with a previewing interface, which makes your job easier. If you double click the left button of mouse, you can see previewing picture in a full screen mode.

Note: This product has a free trial version, all features in this document are useful for you. There is no any watermark in your merging pdf files if you use the registered version.

(1) All features of Wise PDF Watermark

- ▲ A concise and humanistic operation interface
- ▲ Stamp images or text watermarks on PDF file at high speed.
- ▲ Different types of watermarks.
- ▲ Adjust the color, position, angle, range of watermarks as you like
- ▲ Export or import the watermarks file.
- ▲ Show watermark only when printing PDF files and hide when viewing.
- ▲ Hot directory mode are available
- ▲ FTP transfers or e-mailing watermarked PDF are allowed.
- ▲ Batch adding watermark
- ▲ Command line mode

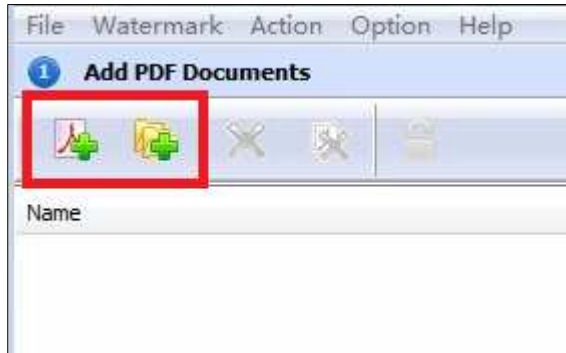
(2) Using Wise PDF Watermark

You can start Wise PDF Watermark by clicking the desktop shortcut on the computer desktop.

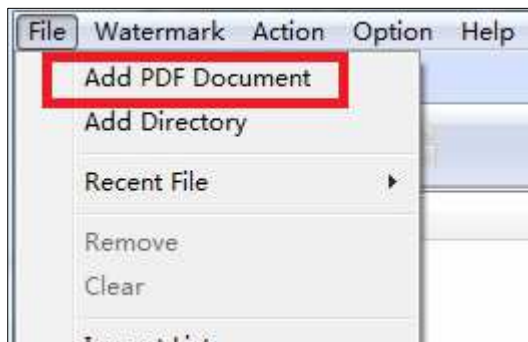
(3) Add PDF files

There are four kinds of methods for you to add your PDF files.

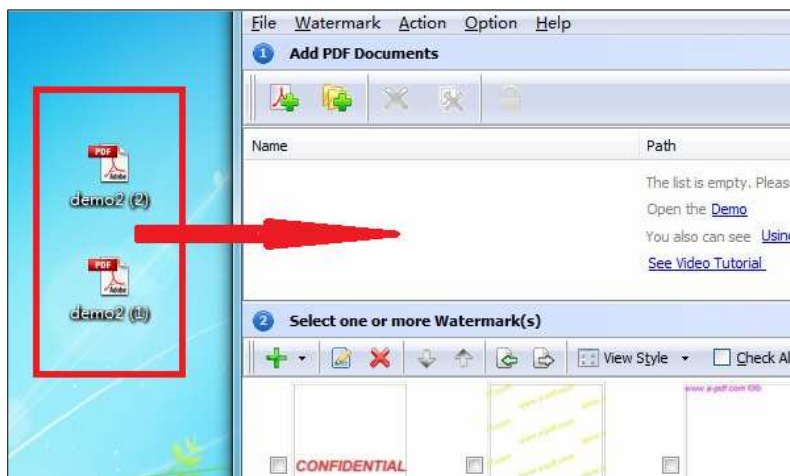
First one, you can click the icon of “Add Files” or “Add Folder” on the operation interface directly and select any PDF files you want to split.



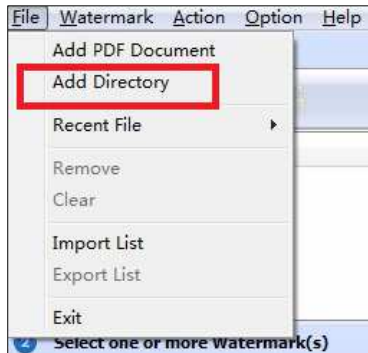
Second, you can click the icon of “Add PDF Document” and select to add PDF files.




Third, you can directly drag the PDF files into Wise PDF Watermark.

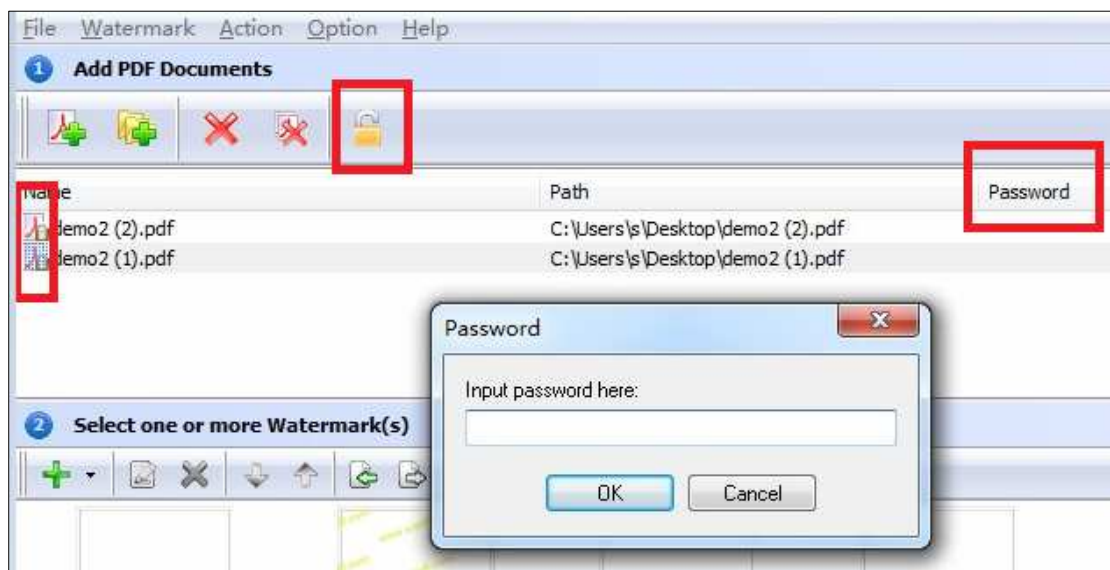


Four, Wise PDF Watermark even enables you to select all PDF files in a folder by using the “Add Directory”.



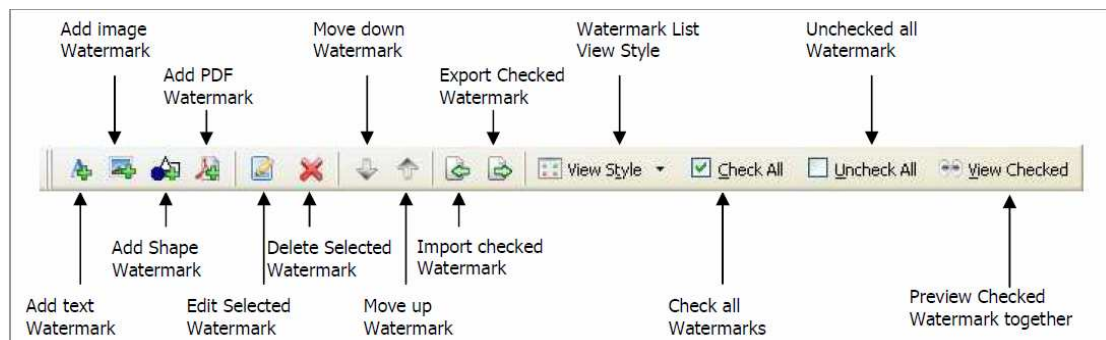
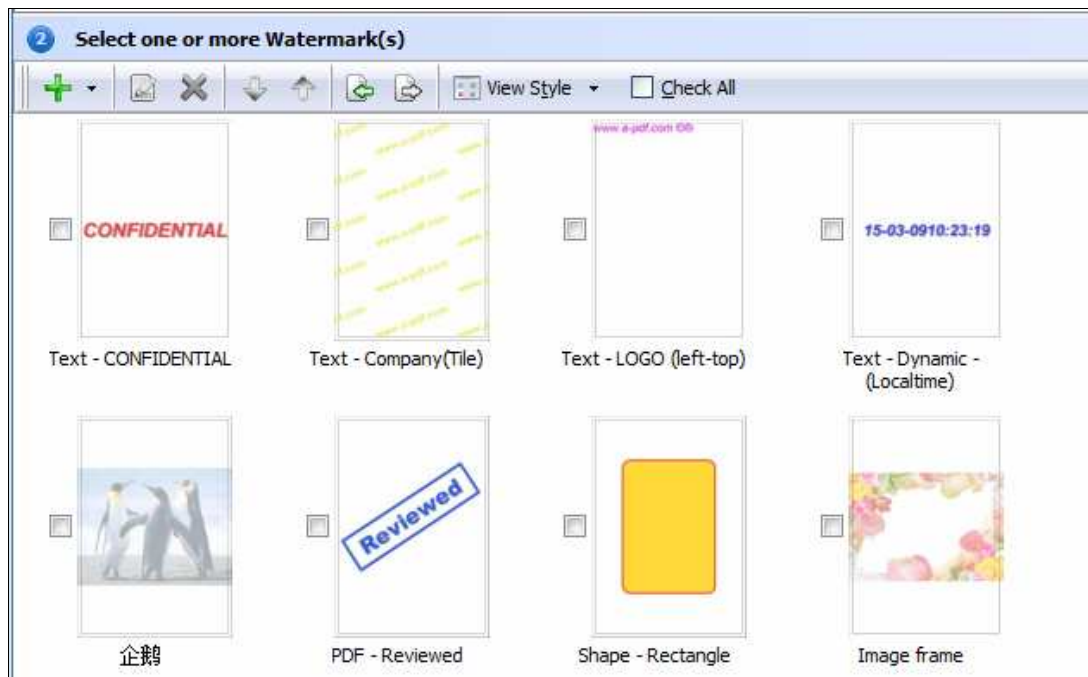
(4) Work with PDF files with password

Wise PDF Watermark also works with those pdf files with password. If the pdf file has a password, the icon of locking in the window will be active. Before adding watermark, you need to enter the password, just click the icon of , and enter your password.



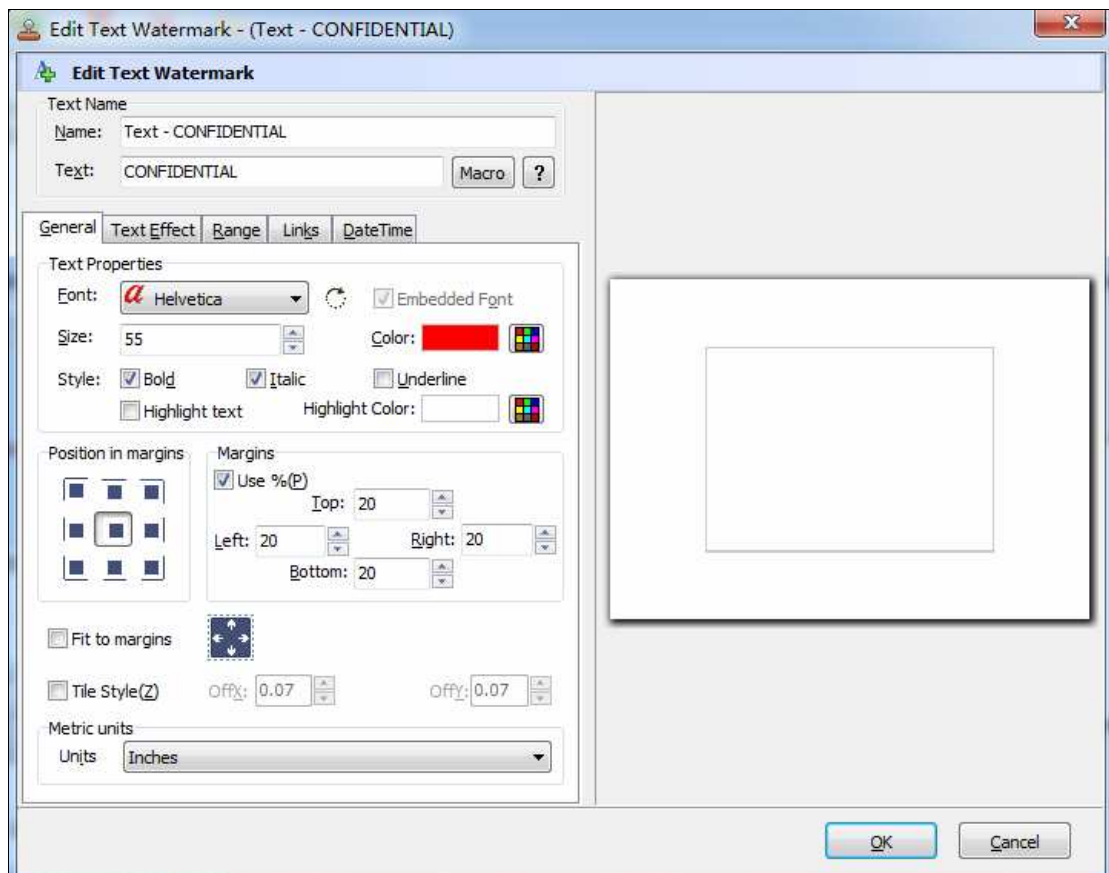
(5) A wide range of watermarks

Wise PDF Watermark provides you with different types of watermarks, including text, dynamic time, images, shapes and so on. It also allows you to import your pictures as watermarks at your option. Moreover, different kinds of watermarks also can be used in one PDF file at the same time.



According to your need, you can select the watermark you like to stamp on your pdf pages. You just need to tick on the left box to choose your favorite watermark.

Moreover, Wise PDF Watermark also allows you to edit all kinds of watermarks, you just need to double click the watermark box, and it will pop up an editing box. Therefore, you can edit the text properties, text effect, links, date time and so on.



General options: General options contain text properties, margins position, metric units and so on. Text properties consist of font, color, size and style. You can define the margins in your pdf pages at the same time.

Text effect: Text effect allows you to modify opacity and rotation, what's more, shadow also can be applied to the watermark, you can also modify the opacity color and angle of the shadow.

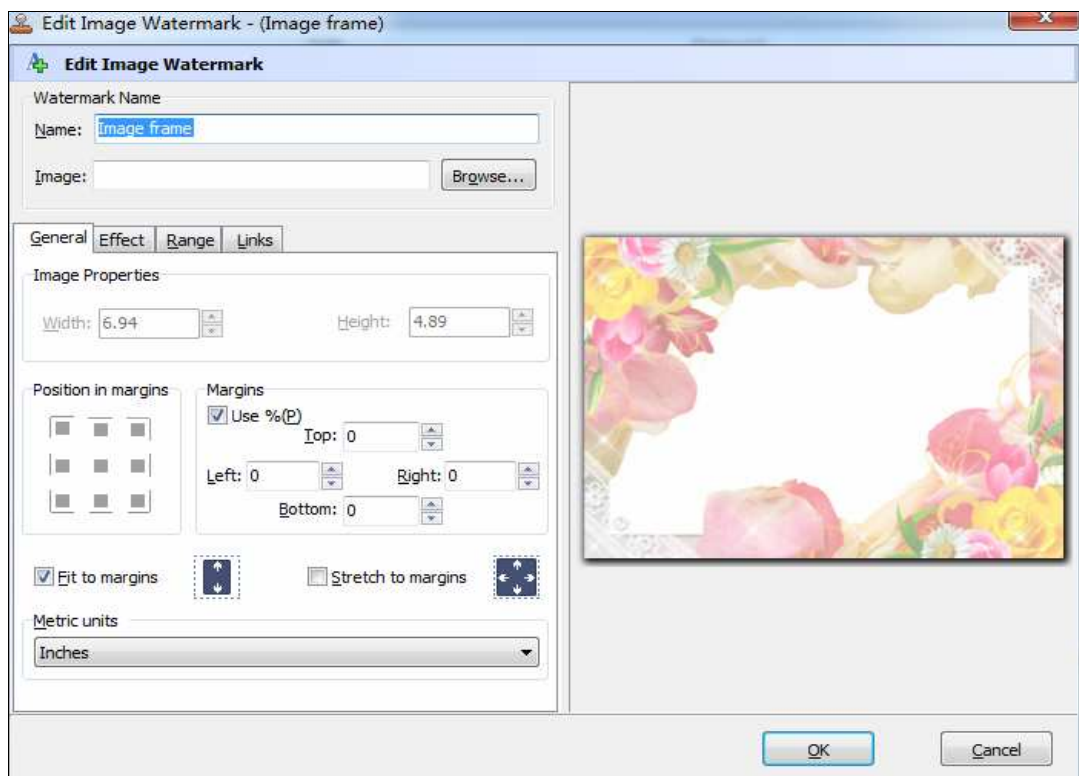
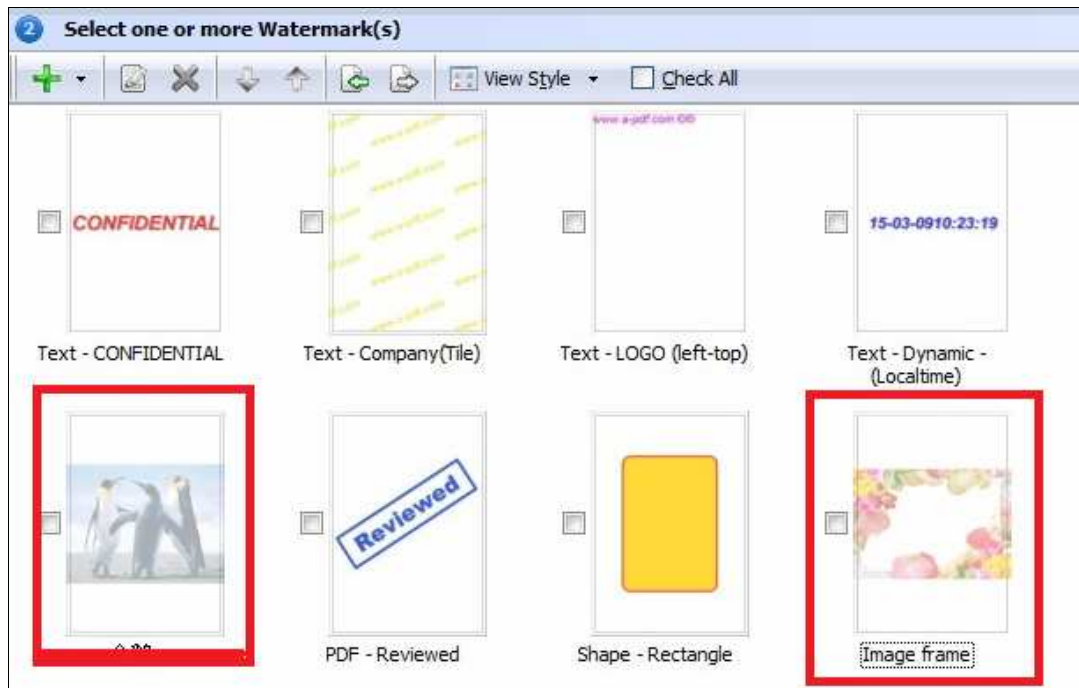
Range: Page range allows you to apply the watermark to all pages, odd pages or even pages. Moreover, you can also define the page range for yourself.

Links: It allows you to set the link to the watermark. You can also add link border on the page.

Date time: It is the watermark of dynamic time. You can choose different styles of date and time in the date and time settings.

(6) Create watermarks by yourself

Wise PDF Watermark also allows you to create Text, image watermarks by yourself. Just double click the watermark box, and begin to edit your watermark in the editing box.




(7) Option

You can set watermark outputting options just by click the icon of “settings” on the left bottom of operation interface.

General option: Page range allows you to apply the watermark to all pages, odd pages or even pages. Moreover, you can also define the page range for yourself. It also allows you to add security to your pdf files and append .BAK to existing extends.

The screenshot shows the 'Page Range' settings panel. At the top, there are three radio buttons: 'All Pages' (selected), 'Odd Pages', and 'Even Pages'. Below this is a section for defining a page range, with 'All Pages' selected and a text input field for 'Page No.'. An example text reads: 'Example: 1,7,10-15,-1,-2' and '-1 stand for the last page, -2 stand for penultimate page, and so on.'. To the left, there is a 'PageScale' section with a checkbox and a text input field set to '100', with the label 'Scale page to 100 % before applying watermark.'. To the right is a 'Position in page' section with a 3x3 grid of checkboxes. Below these is an 'Add Security' button and 'Current Security: None'. A checked checkbox 'Backup file on added watermark' is followed by two radio buttons: 'Append .BAK to existing extends' (selected) and 'Backup to Directory'. At the bottom, there is a text input field and a 'Browse...' button.

PDF Print: If you want to stamp your watermarks only on the printing pages, you just need to set the print range. What' more, you can also define the print page by yourself, you just need to input the page number directly.



If you do not have Shell Print setup for PDF files on your computer, the best solution to this problem is to download the latest version of Foxit Reader or Adobe Acrobat Reader. You can download it in here:

Acrobat Reader: <http://www.adobe.com/products/acrobat/arupdate.html>


Foxit Reader: <http://www.foxitsoftware.com/pdf/reader/download.php>

Setup Print PDF Association

Auto Detect Association

Set PDF Association

Print Range

 Set page range for printing

All pages

Range(X) From To

Start-Up: If you want Wise PDF Watermark to run automatically, you just need to check the option of auto running when you login windows.

Import and Export: This option allows you to import the watermark to add to watermarks list and export all or partial watermarks.

FTP: it also supports for FTP transfers and e-mailing your watermarked PDF files directly.

(8) Hot directory mode command line mode

Hot directory mode is a batch processing way for you to add watermarks to all PDF files in a folder. Any PDF files moved to hot directory file will be stamp with watermarks and saved in a backup directory. Command line operation is allowed in our software.

(9) Ending

After you add watermark to your pdf files, just exit from the dropdown list.

Everything will go successfully.